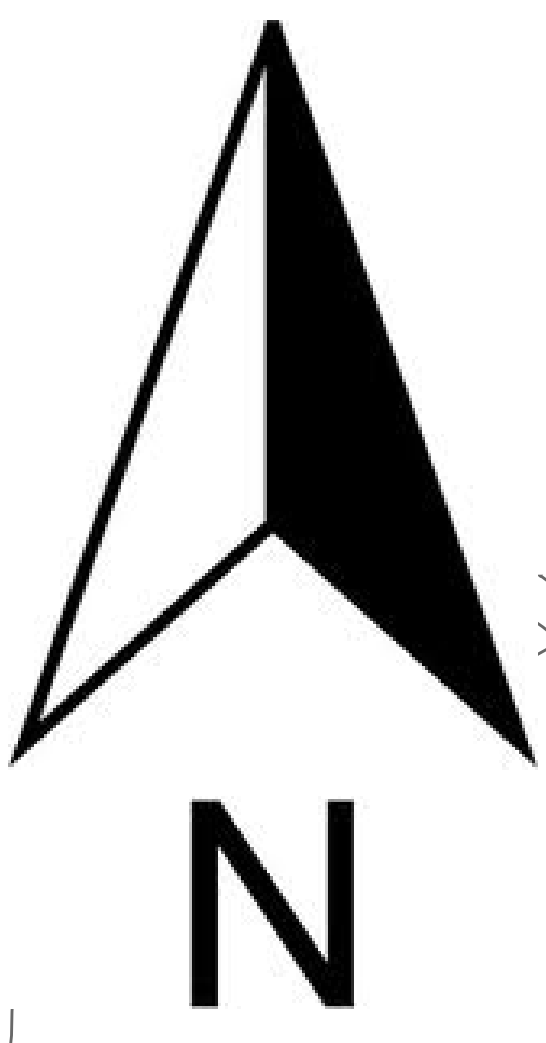


# City of Athens Official Zoning Map

## August 21, 2014



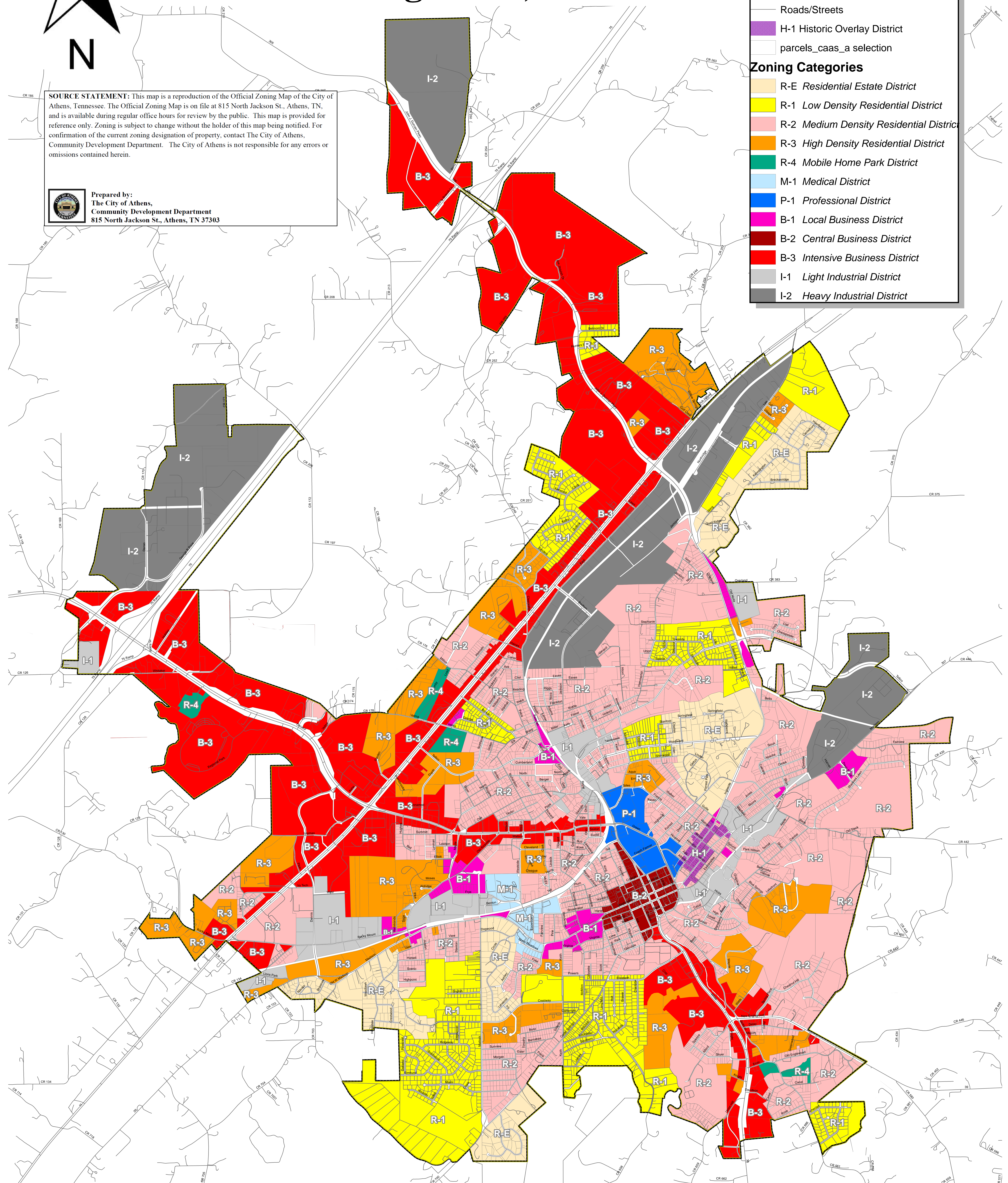
**SOURCE STATEMENT:** This map is a reproduction of the Official Zoning Map of the City of Athens, Tennessee. The Official Zoning Map is on file at 815 North Jackson St., Athens, TN, and is available during regular office hours for review by the public. This map is provided for reference only. Zoning is subject to change without the holder of this map being notified. For confirmation of the current zoning designation of property, contact The City of Athens, Community Development Department. The City of Athens is not responsible for any errors or omissions contained herein.



Prepared by:  
The City of Athens,  
Community Development Department  
815 North Jackson St., Athens, TN 37303

### MAP LEGEND

- CityLimits-Annexation
  - Roads/Streets
  - H-1 Historic Overlay District
  - parcels\_caas\_a selection
- #### Zoning Categories
- R-E Residential Estate District
  - R-1 Low Density Residential District
  - R-2 Medium Density Residential District
  - R-3 High Density Residential District
  - R-4 Mobile Home Park District
  - M-1 Medical District
  - P-1 Professional District
  - B-1 Local Business District
  - B-2 Central Business District
  - B-3 Intensive Business District
  - I-1 Light Industrial District
  - I-2 Heavy Industrial District



0 2,400 4,800 9,600 Feet